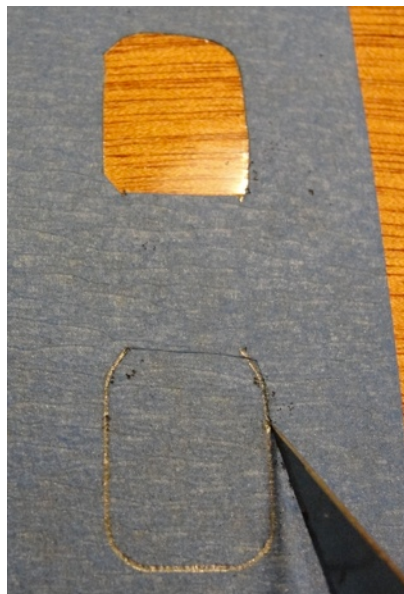
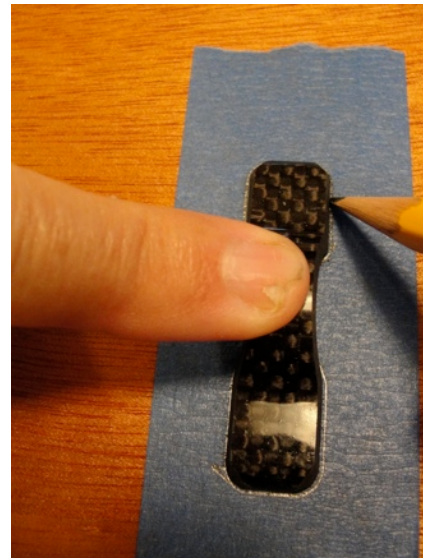


Carbon Eye strap Gluing Instructions

Apply a piece of wide masking tape where you want to attach an eye strap.

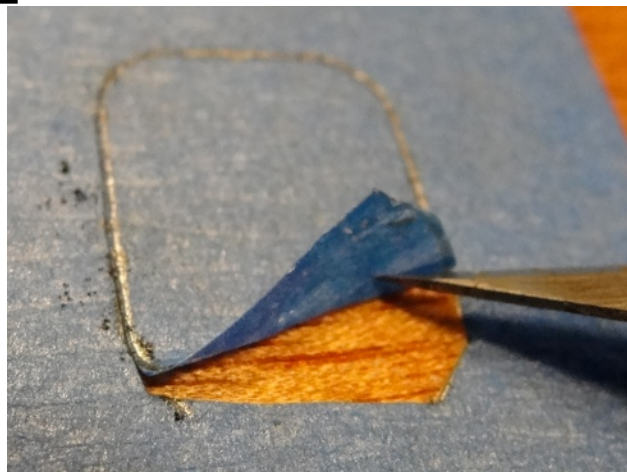
Place the eye strap over the tape and align carefully, parallel to the centerline or deck chine.

Trace around it with a sharp pencil. →



Cut on the pencil line with a sharp Exacto knife or single edge razor blade.

Use light pressure on the blade and try to follow the center of the pencil line. ←



Remove the tape with the tip of the knife. →



Eye straps must bond to clean epoxy to be strong.

If your boat was varnished, use a very sharp 1/4" chisel as a scraper to remove the varnish. ←

Bare epoxy can be prepared for bonding with a piece of 3-M abrasive pad or fine sandpaper.

Work parallel to, or away from the edges of the tape. →



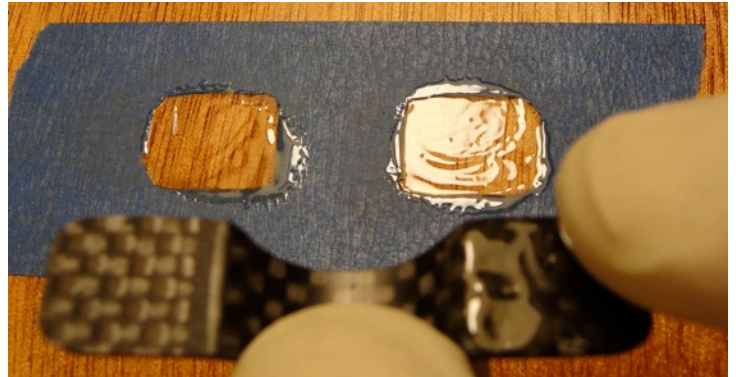
Prepare the underside of the eye strap with sandpaper as shown.



Eye straps can be glued on with the same epoxy you built your boat with (add a small amount of thickener) or better yet, use a toughened epoxy, such as G-flex.

Remove the fine dust from gluing surfaces by rubbing with a clean rag.

Apply a small amount of epoxy to both surfaces with a gloved fingertip.



Hold the eye strap down gently with one finger while scraping the excess glue from the edges of the eye strap with a sharpened stick.



Leave the tape in place until the epoxy cures.



Glued and finished eye straps.